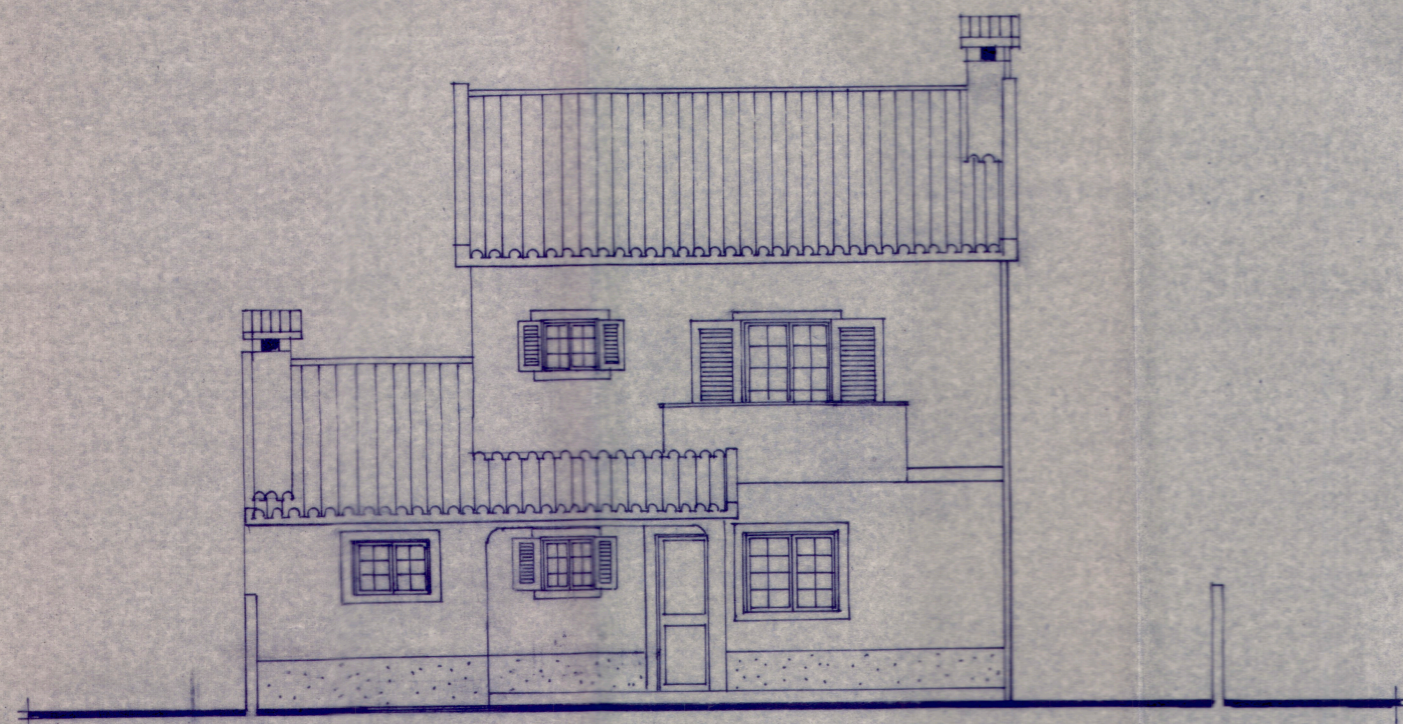
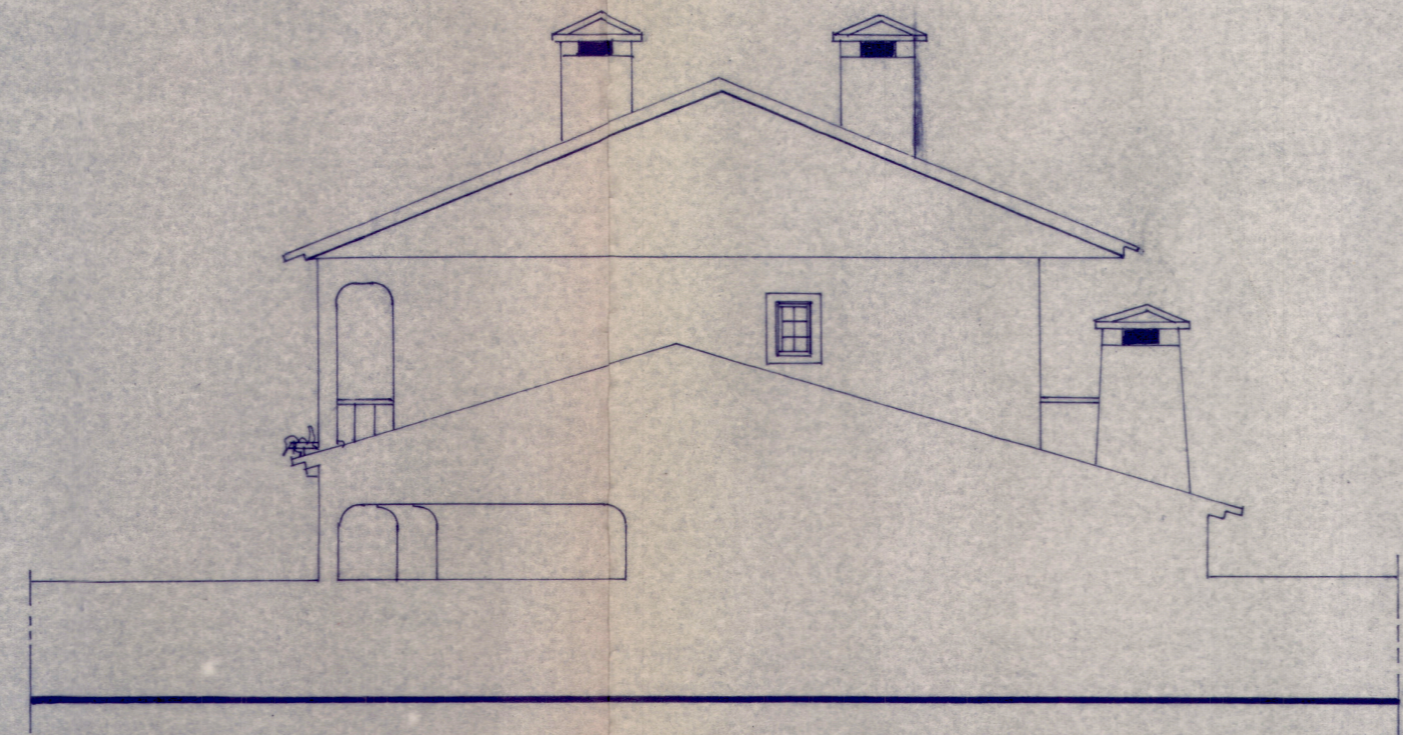


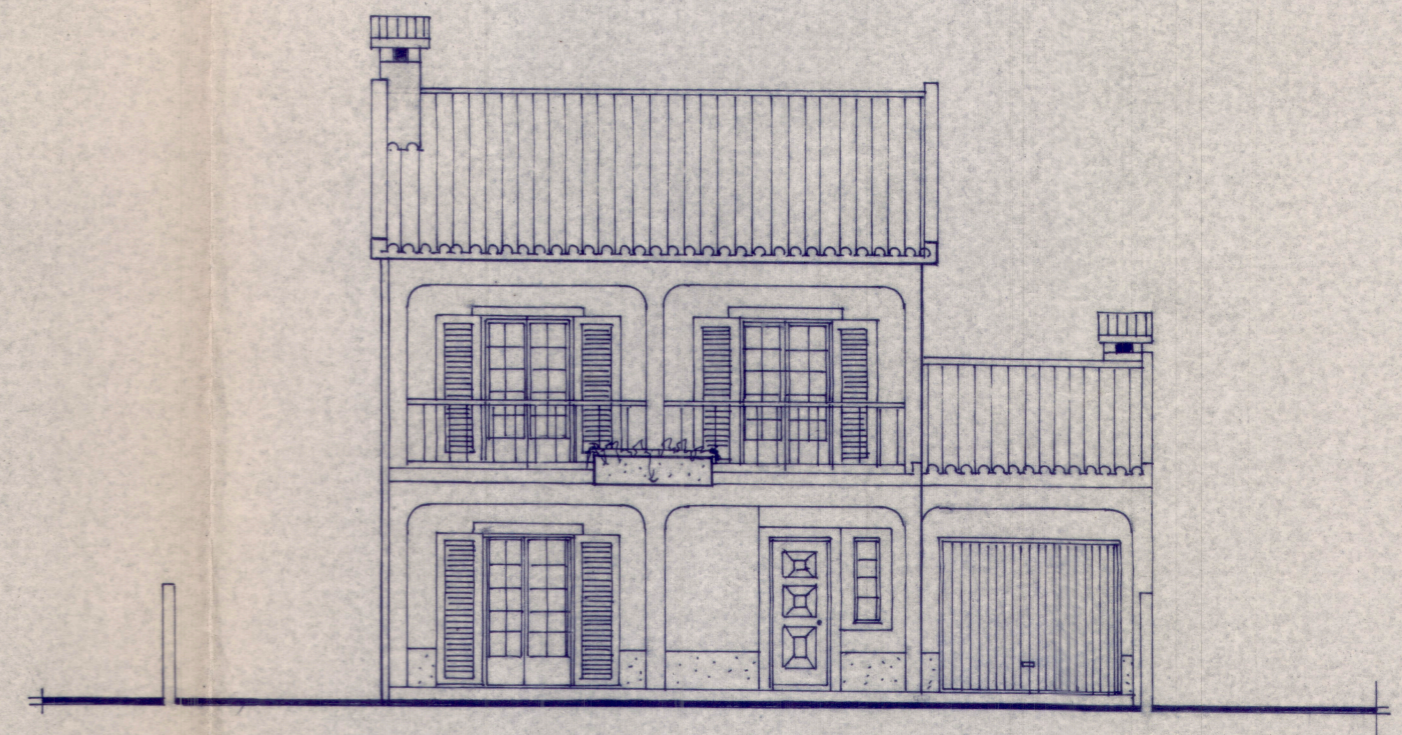
ORIGINAL



ALÇADO POSTERIOR

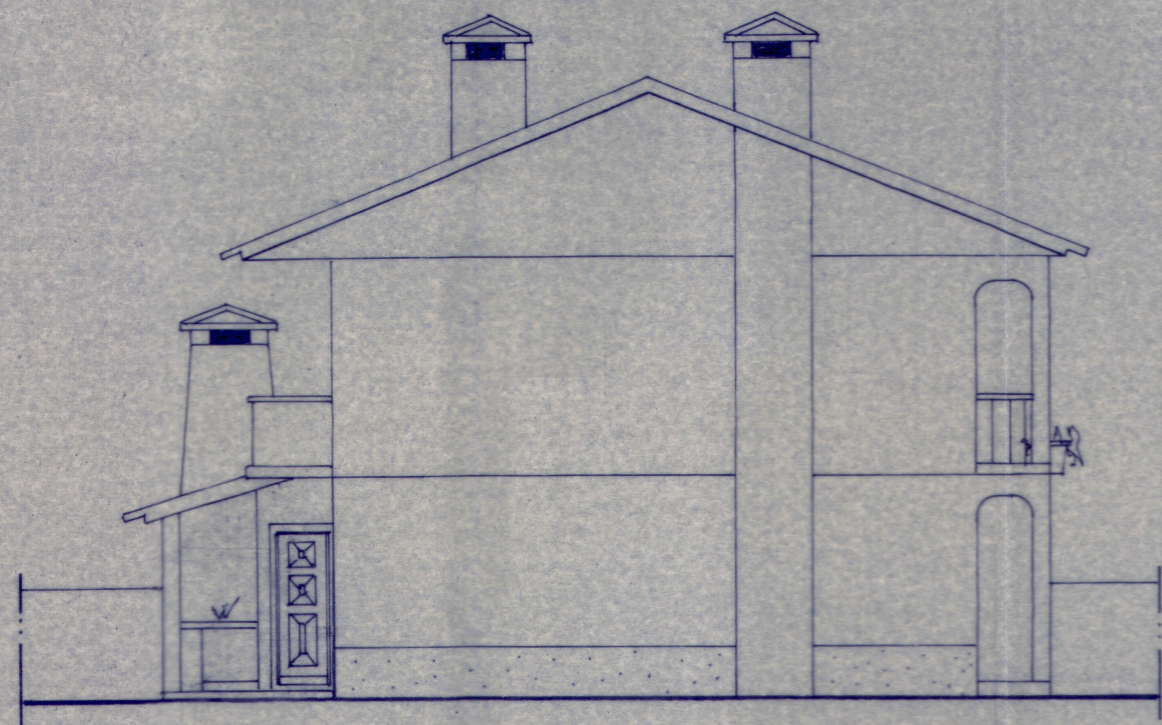


ALÇADO L. DIREITO

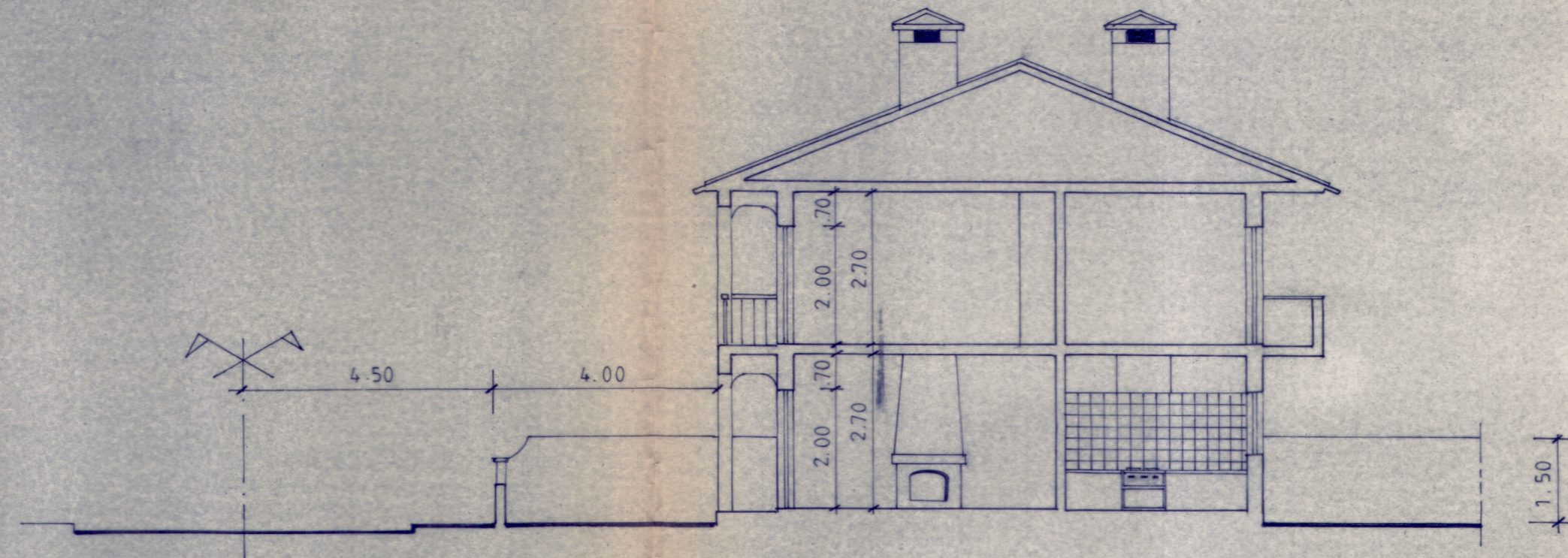


ALÇADO PRINCIPAL

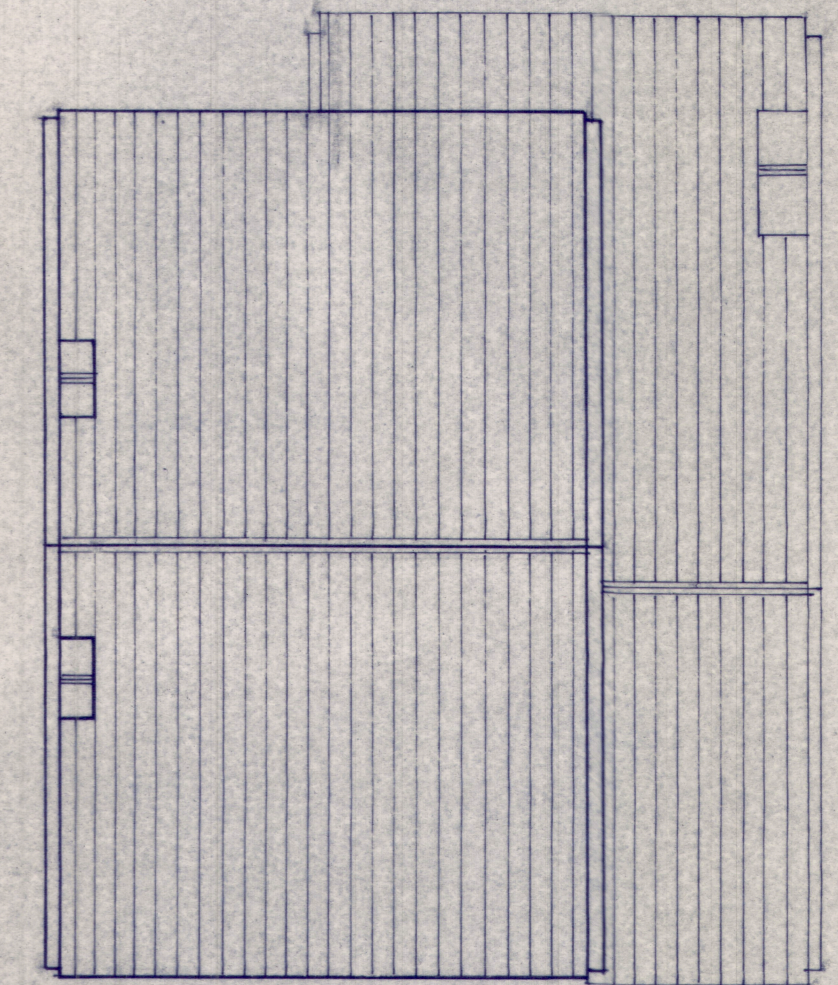
CARAPINHA & SANTOS Lda.		5
GUIZANDERIA ◊ LOTE nº 42		
MORADIA	ESCALA 1:100	Nº 1634



ALÇADO L. ESQUERDO

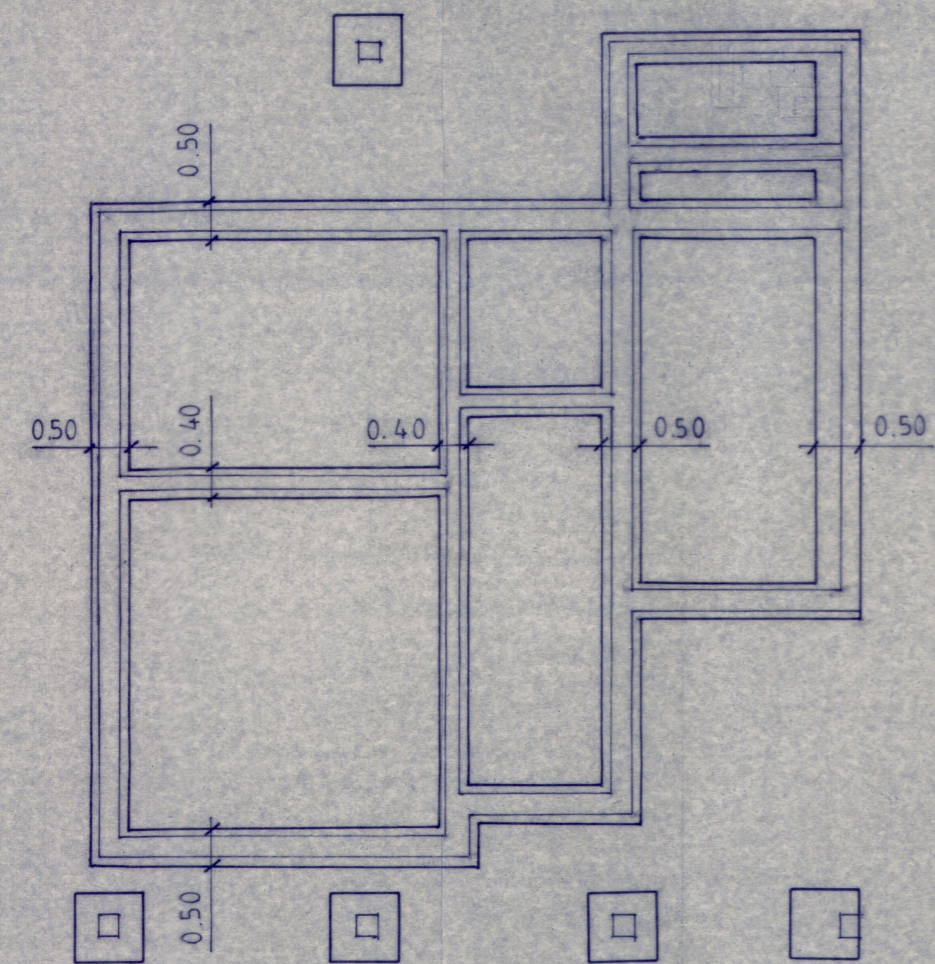


CORTE A B

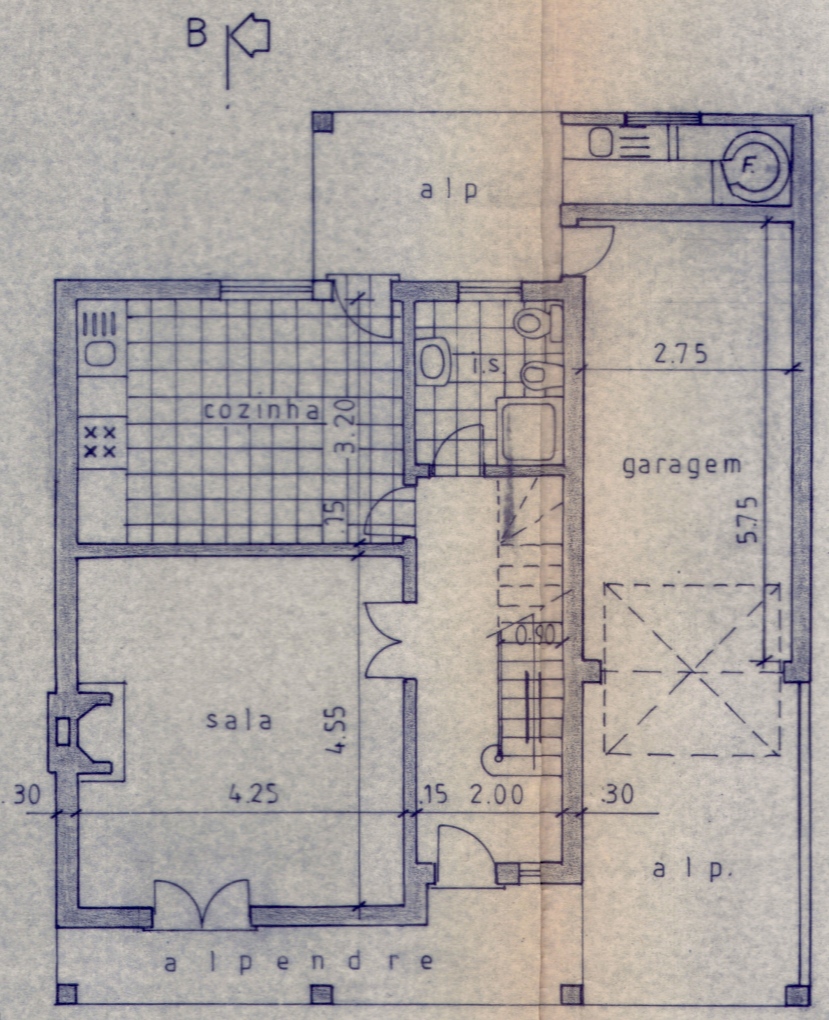
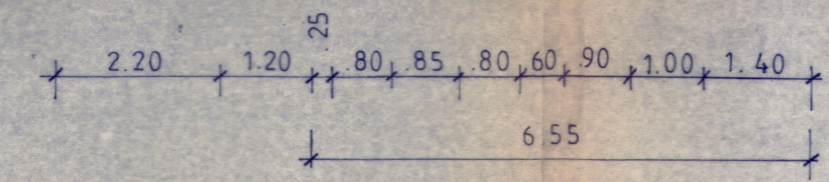


COBERTURA

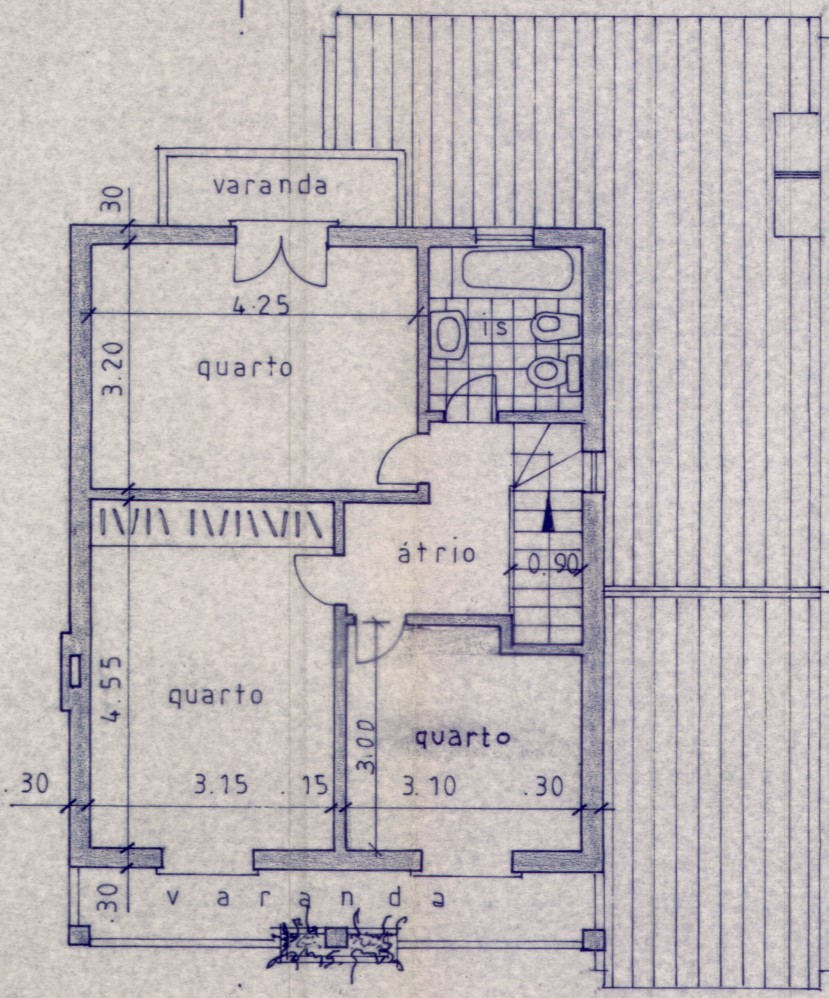
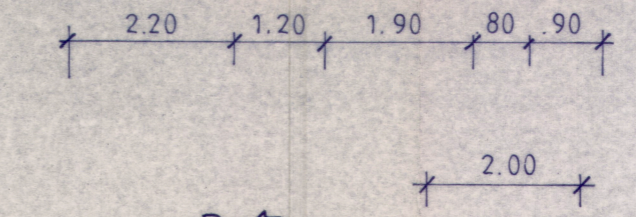
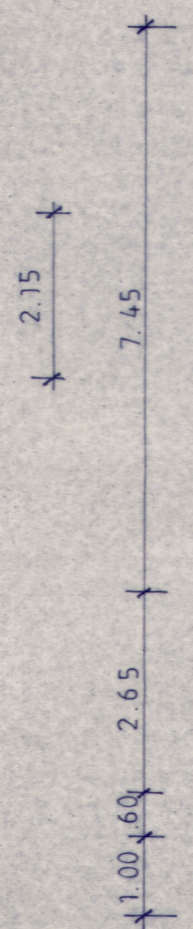
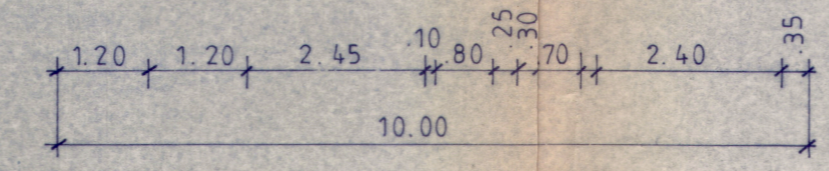
CARAPINHA & SANTOS Lda.		4
GUIZANDERIA ◊ LOTE nº 42		
MORADIA	ESCALA Nº 1:100 1634	



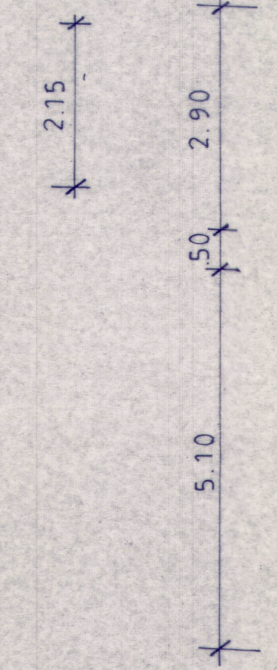
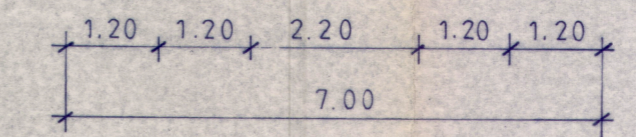
FUNDAÇÕES



RÉS do CHÃO



1º ANDAR

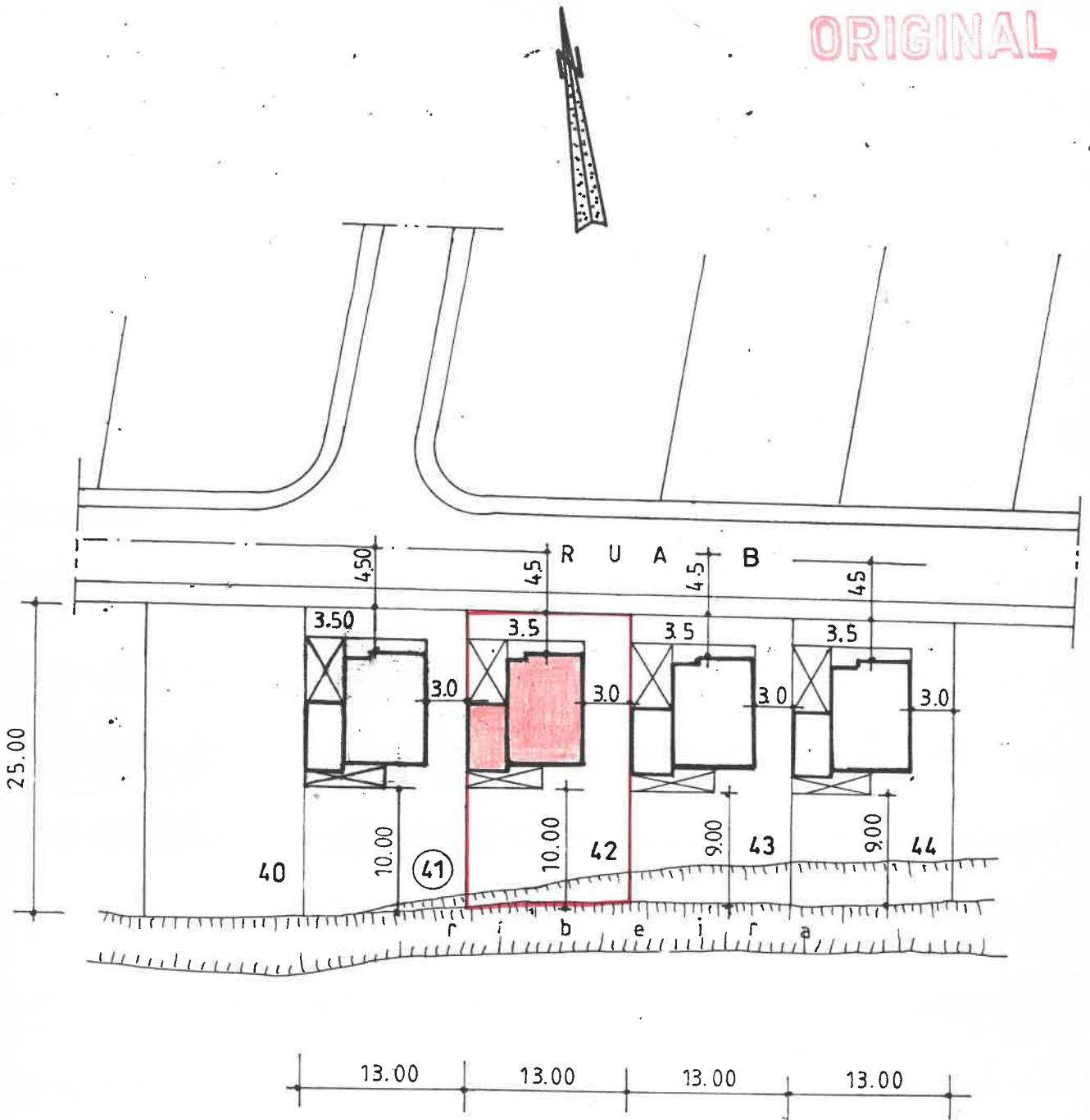


CARAPINHA & SANTOS Lda.  
 GUIZANDERIA ◊ LOTE nº 42

MORADIA

ESCALA	Nº
1: 100	1634

ORIGINAL



IMPLANTAÇÃO

*[Handwritten signature]*

CARAPINHA & SANTOS Lda.		2
GUINZANDERIA ◊ LOTE nº 42		
MORADIA	ESCALA 1:500	Nº 1634